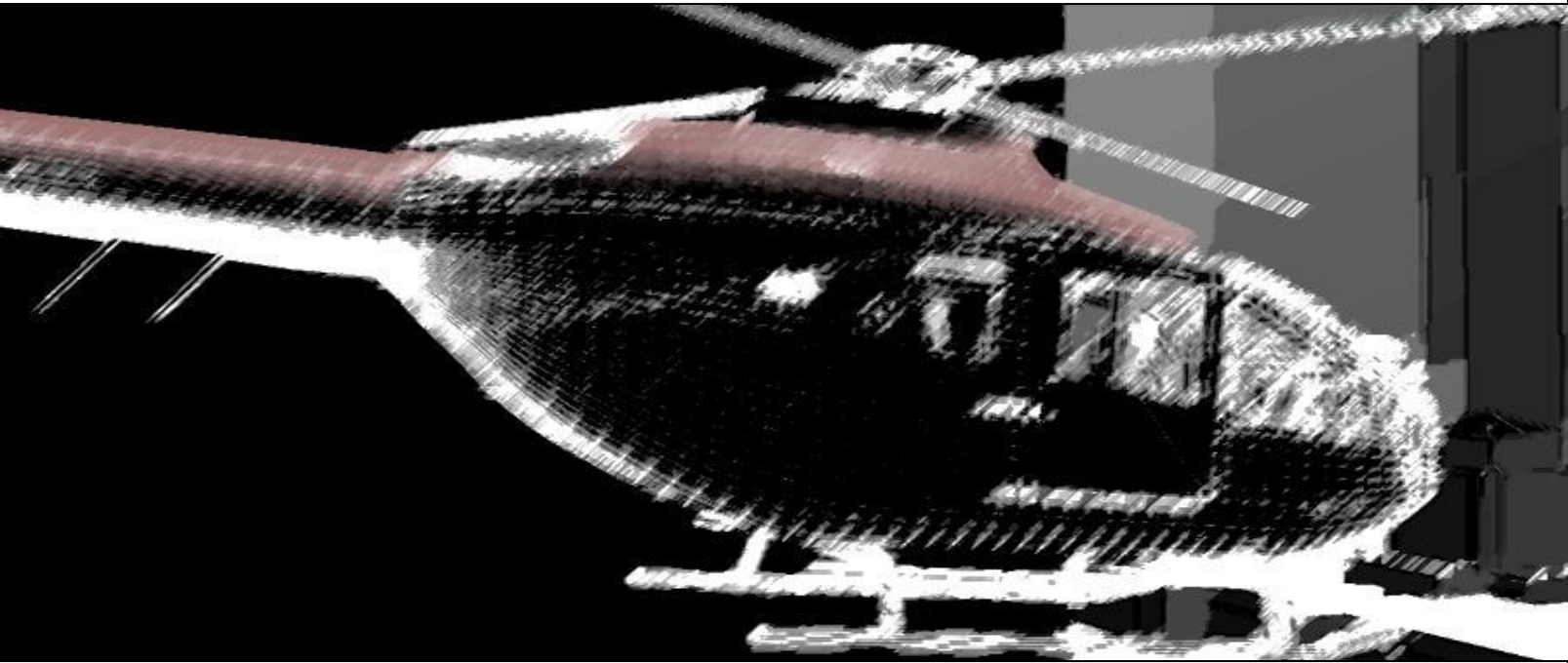


CUSTOM AEROMEDICAL SOLUTIONS



www.medevac.com



TABLE OF CONTENTS

Mounting Solutions

Pro Series

Pages 3-5

Standard Series

Pages 6-10

Legacy Series

Pages 11-17

Single Track Mounts

Pages 18-20

Stretcher Solutions

Aero Stretchers

Pages 21-24

Accessories

Pages 25-29

Incubator Transporters

Pages 30-32

Litter Solutions

Aero Litters

Pages 33-35

Advance Life Support

Page 36

Modular Transport Litter

Pages 37-38

Modular Litter Accessories

Pages 39-41

Neonatal / Pediatric Solutions

Pages 42-43

Confidentiality Notice:

This document and the information contained herein, including, but not limited to the ideas, concepts, and know-how are proprietary and confidential to Ferno Aviation, Inc. This information shall be maintained as proprietary and confidential: shall not be copied or reproduced in any form whatsoever and shall not be disclosed in any form to anyone other than an authorized representative of Ferno Aviation, Inc., who is contractually obligated not to disclose same without the express written consent of Ferno Aviation, Inc.

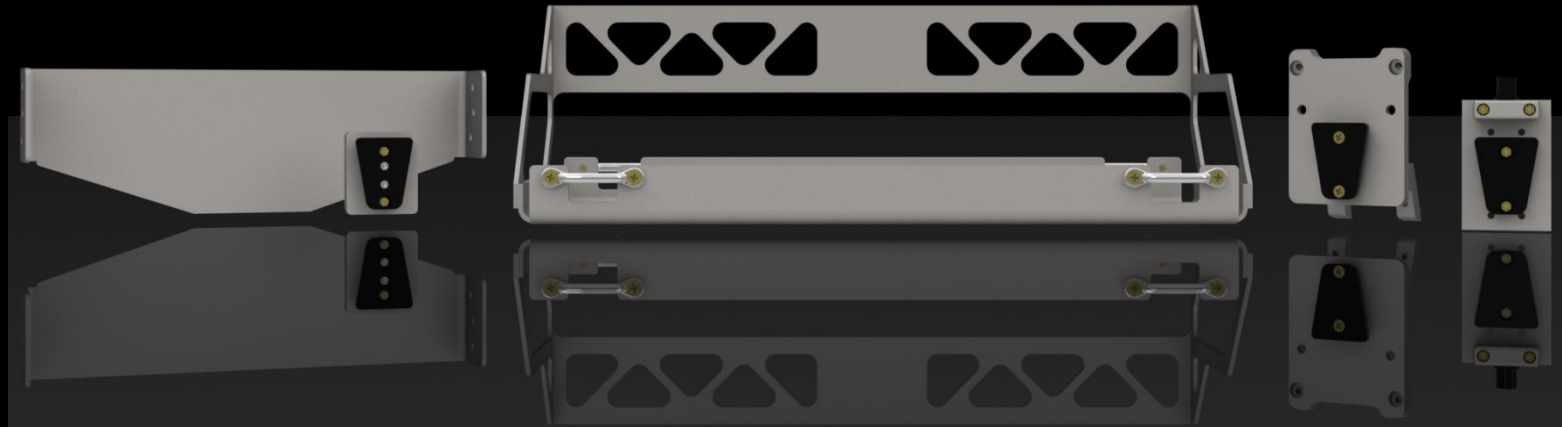
770.521.1005

FOB Alpharetta, GA



INTEGRATED MOUNT SYSTEM (I.M.S.)

Pro Series



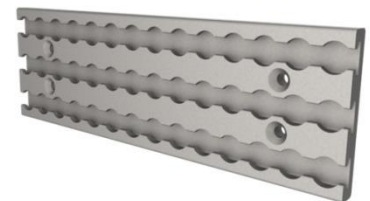
Our Pro Series is the lightest group of mounting solutions in the I.M.S. family. Designed for use in any EMS or Medevac application where space and weight are critical. This system allows medical devices to be rapidly deployed or removed as needed by medics.

The *ProV Universal Receiver* serves as an interface with medical devices and our Mini-Track. Quick-release provisions allow the device to be deployed or removed from the receiver and allows rapid deployment, adjustability or removal of the receiver from the Mini-Track. The *ProV* includes a quick-cam feature to secure the fit and feel of the receiver to the Mini-Track. CNC machined from aircraft aluminum.

FM300A100 (3.3" H x 2.25" W x 1.25" D)

Our *Mini-Track* serves as the base plate of the *Pro Series* system and can be installed to any surface allowing vertical or horizontal adjustability. Available in pre-cut or custom lengths as needed.

FM100E100-7 (2.25" x 7")



(I.M.S.) PRO SERIES

Propaq MD/X

The *Propaq MD/X Adaptor* is a lightweight piece that mounts directly to the back of the Propaq MD. Once the adaptor is in place, it serves as an interface between the Propaq MD/X and the *ProV Receiver*. (4) Screws allow the adaptor to be installed or removed quickly from the device as needed.

FM300A102-300MD (4.5" H x 3.25" W x 2.20" D)



Impact 731/754

The *Impact 754/731 Adaptor* is a lightweight piece that mounts directly to the back of the Impact device. Once the adaptor is in place, it serves as an interface between the device and our *ProV Receiver*. Set screws allow the adaptor to be installed or removed quickly from the device as needed. CNC machined from aircraft aluminum.

FA829A210-V (2.25" H x 1.95" W x .86" D)



Belmont Fluid Warmer

The *Belmont Adaptor* is a lightweight piece that mounts directly to the back of the Belmont Buddy Plus. Once the adaptor is in place, it serves as an interface between the device and our *ProV Receiver*. (6) Screws allow the adaptor to be installed or removed quickly from the device as needed. Made from aircraft aluminum.

FA829A190-V (4.0" H x 12.5" W x 2.54" D)

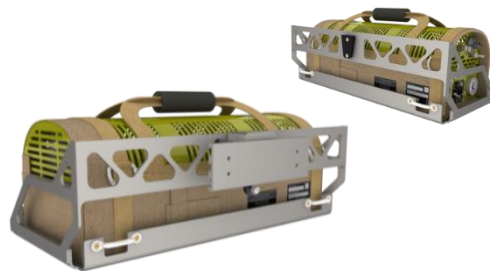


(I.M.S.) PRO SERIES

BMOS LOX

The *BMOS LOX Mount* is a lightweight mount designed to hold Essex Cryogenics' 3 liter BMOS Portable LOX System. Once the BMOS is in place, the mount serves as an interface between the LOX System and our ProV Receiver. (4) Velcro straps secure the unit in place while allowing the BMOS to be installed or removed quickly from the mount as needed. Made from aircraft aluminum.

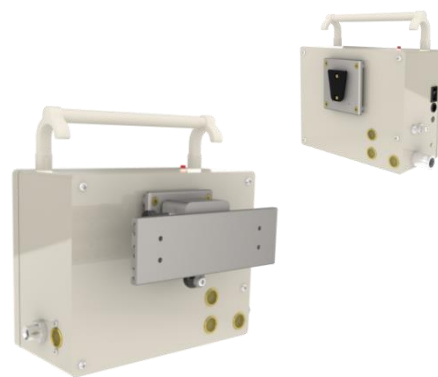
FM400A103-V (5.9" H x 20.0" W x 10.31" D)



Biomed Devices

The *Biomed Devices Adapter* is a lightweight custom piece designed to attach directly to any Biomed unit. Once the adaptor is in place, it serves as an interface between the Biomed unit and our ProV Receiver. (4) Aircraft fasteners secure the adaptor in place, allowing the device to be installed or removed by medics as needed. Made from aircraft aluminum.

FM400A108-V (3.3" H x 3.2" W x .63" D)



D.360 Pro Swivel Mount

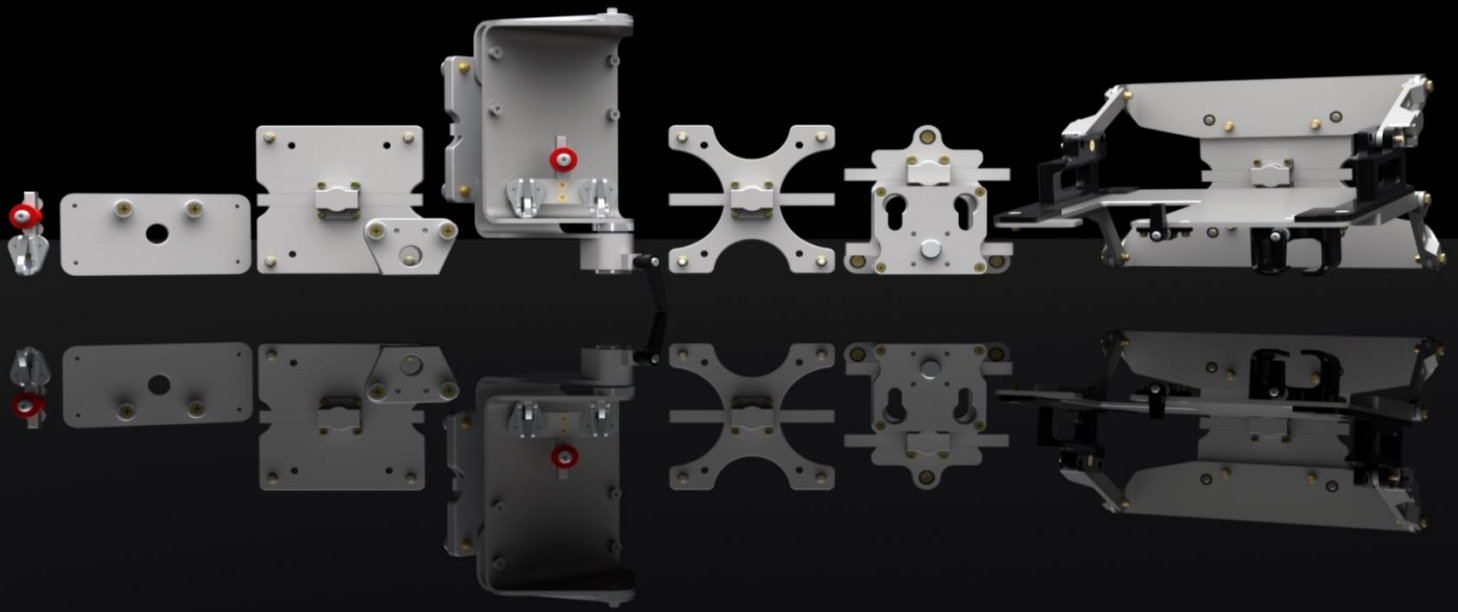
The *D.360 Pro Swivel Mount* is designed for use with our *Mini-Track* and medical devices employing our *D.360 Swivel System*. Once the mount is in place, it provides a *Swivel Base* for vertical surfaces and is also compatible with our *Advanced Life Support Litter*. Quick-release provisions allow the mount to be rapidly installed or removed from the *Mini-Track*.

FA906A075 (6.5" H x 5.0" W x 9.2" D)



INTEGRATED MOUNT SYSTEM (I.M.S.)

Standard Series



The *Standard Series* is a larger and more robust group of mounts in the I.M.S. family. Designed for use on any vehicle platform, in any environment, or any application where space and weight are not as critical - or where heavier devices are in need of mounting provisions. The simple quick-release system consists of a wall plate & medical device mount - or a universal mount, and an adaptor attached directly to the device. This system allows any medical device employing the *Standard Series* to be rapidly deployed or removed as needed .

20G Tested in All Directions



(I.M.S.) STANDARD SERIES

Base Plates

Ferno-Track™ serves as a base plate for the *I.M.S. Standard Series* system. Providing vertical or horizontal adjustability and designed for EMS or Medevac applications. Available in pre-cut or custom lengths as needed.

FA643E134 (8"x 22.5")

FA643E133 (8"x 30")

The *Fixed Position Mounting Plate* serves as an alternative base plate for the *I.M.S. Standard Series* system, suited best where space may be limited or where a fixed position is desired in EMS or Medevac applications..

FA643E130 (8"x 8")



Universal Interfaces

The *Generic Equipment Mount* serves as an interface between any medical device and our Ferno-Track or fixed position mounting plate. Available with or without pre-drilled mounting provisions. A single quick-release, allows for rapid deployment and removal of the mount. CNC machined from aircraft aluminum.

FA643A310 (6"x 6")

FA643A315 (6"x 6" - pre-drilled hole pattern)

The *Generic-X Equipment Mount* serves as an interface exactly like its cousin, sans a few pounds. Available with or without pre-drilled mounting provisions. A single quick-release, allows for rapid deployment and removal of mount from wall.

FA643A310-X (6"x 6")

FA643A315-X (6"x 6" - pre-drilled hole pattern)

The *Universal Equipment Mount* serves as an alternate interface where our *Standard Series* device adapters are employed.

FA829A3100 (6" H x 5" W x 1.7" D)



(I.M.S.) STANDARD SERIES

Universal Equipment Mount / Adaptors

The *Impact 754 / 731 Ventilator Adaptor* is a lightweight custom piece that mounts directly to the back of the unit. Once the adaptor is in place, it serves as an interface between the device and our *Universal Equipment Mount*. Set screws allow the adaptor to be installed or removed quickly from the device as needed.

FA829A1200 (2.25" H x 3.2" W x 1.36" D)



The *Propaq 206 Adaptor* is a lightweight custom piece that mounts directly to the back of the Propaq unit. Once the adaptor is in place, it serves as an interface between the device and our *Universal Equipment Mount*. (4) fasteners allow the adaptor to be installed or removed quickly from the device as needed.

FA829A1500 (3.25" H x 6.75" W x .69" D)



Generic Equipment Mounts

The *Propaq 206 Series Swivel Mount* uses our *Generic Mount* as its base and attaches directly to the back of the 206 unit (with or without printer). The swivel mount serves as an interface between the device and our Ferno-Track™ or Fixed Position Plate allowing 70 degrees of rotation for viewing. (4) fasteners allow the mount to be installed or removed quickly from the device as needed.

FA821A250 (11.95" H x 6.5" W x 7.93" D)



The *Sonosite M-Turbo Mount* uses the *Generic Mount* as its base and attaches directly to the M-turbo unit. The mount serves as an interface between the device and our Standard Ferno-Track™ or Fixed Position Plate. Includes provisions for docking station. The M-Turbo unit and probe can be removed quickly from the device as needed.

FA829A1700 (8.25" H x 13.46" W x 14.36" D)



(I.M.S.) STANDARD SERIES

Generic-X Equipment Mounts

Using our *Generic-X* interface for *Ferno-Track™*, our *Surgical Glove Box Mount* serves as a location to secure a single box of surgical gloves and provides rapid accessibility. Originally designed for use in fixed wing application, true vertical configurations are available. Quarter-turn capture and release allow the box of gloves to be removed from the mount as needed, and the mount includes an integrated adjustable side plate to allow for wider boxes.

FA887A130 (7.6" H x 4.6" W x 7.7" W)



Our new *BVM Wall Mount* is designed to secure a single BVM while allowing the BVM to be rapidly accessible. Ideal for use in aircraft or ground vehicles employing our Standard Series *Ferno-Track™*. Quick-release pin allows the BVM to be installed or removed from mount as needed. The mount also employs a quick-release system allowing the mount to be installed or removed from *Ferno-Track™* as needed.

FA887A160 (11" H x 6.2" W x 7.6" W)



Our new *Generic-X Wall Mount* for Laerdal's Compact Suction Unit 4 uses our *Generic-X* interface for *Ferno-Track™*. Originally designed for use in fixed wing aircraft, this mount compensates for the curvature of the fuselage. Standard vertical variants are available. Quarter-turn capture and release allow the CSU4 to be rapidly installed or removed from the mount as needed.

FA887A140 (10.3" H x 9.8" W x 6" W)



Our new *Modular Laptop Wall Mount* is designed for use with *Ferno-Track™*. The mount employs a RAM gimbal for infinite adjustability. Quick-release provisions allow the laptop to be rapidly installed or removed from the mount as needed and quick-release provisions allow the mount to be rapidly installed or removed from *Ferno-Track™*. This mount can be configured to fit an array of laptops.

FA891A475 (variable H x 12.25" W x variable depth)



(I.M.S.) STANDARD SERIES

Custom Applications

Ferno Aviation's new low-profile, *Modular Track Mount* for CareFusion's ReVel® PTV is designed for vertical installation in Aeromedical or Ground EMS platforms. The wall system is designed to interface with (2) rows of single seat-track and can be adjusted for proper location. This mount is 20.G tested in all directions, and includes a one-hand, "T" shaped quick-release handle for rapid removal of the device. Made by Ferno Aviation for CareFusion.



Contact CareFusion for purchase information.

FA853A205 (14.4" H x 10.25" W x 2.43" D)

Our *Modular Oxygen Bottle Wall Mount* is designed for use with interiors using Ferno-Track and provides a secure mounting platform for 3 (EE) sized Oxygen bottles. Quick-release provisions allow the mount to be rapidly installed or removed from the interior. Includes handles on each side of the mount for handling.



FA891A450 (29.7" H x 27.16" W x 8.8" D)

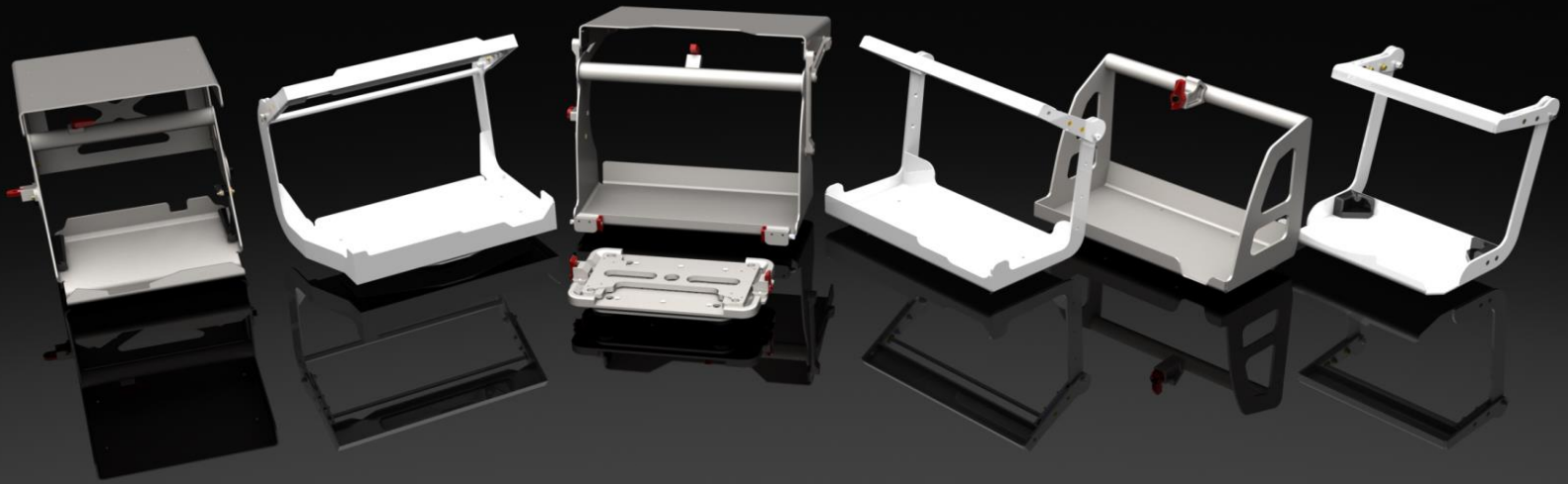
Our *IMS Modular Track Handle* is designed for use with *Ferno-Track™*. The integrated ambidextrous quick-release trigger allows the handle to be rapidly secured (vertical or horizontal configuration) or removed from track as needed. The *IMS Handle* can also serve as a mounting location for an array of devices employing our *Universal Pole Clamp System*.



FA891A900 (6.0" H x 7.8" W x 3.8" D)

INTEGRATED MOUNT SYSTEM (I.M.S.)

Legacy Series



Our *Legacy Series* of mounting solutions represent 20 years of Ferno Aviation's no-nonsense design philosophy for medical devices. We believe in producing simple, lightweight mounts with superior strength. Due to their efficient and simple design, these mounts are perfectly suited for both Air and Ground applications.

All Legacy Series mounts are 20G tested.



(I.M.S.) LEGACY SERIES

Lifepak 12 / Lifepak 15

The *Lifepak 12 Overhead Mount* is a custom piece that mounts directly to any overhead surface. A quick-release detent, allows the device to be installed or removed quickly from the mount. Once the Lifepak 12 is secured in place, quick-release provisions allow the mount to fold upwards, and the LP12 can be deployed or stowed as needed.

FA523A010 (15.0" H x 17.4" W x 12.35" D)



The *Lifepak 12 Surface Mount* attaches directly to any surface where space is optimum. Designed for use with or without pouches. One hand quick-release and capture handle allows the Lifepak 12 to be rapidly deployed or removed from the mount as needed. An optional swivel base is also available.

FA523A800 (Surface Mount) (14.26" H x 16.5" W x 8.85" D)

FA523A1000 (Optional Swivel Assembly)



The *Lifepak 12/15 Surface Mount* attaches directly to any surface where space is optimum. Designed for use with Lifepak 12 or 15 with pouches. The one hand quick-release and capture handle allows the device to be rapidly deployed or removed from the mount as needed. An optional swivel base is available.

FA642A100 (Surface Mount) (14.24" H x 16.0" W x 10.88" D)

FA642A105 (Optional Swivel Assembly)



The *Lifepak 15 Surface Mount* is a simple platform that mounts directly to any surface. A quick release provision, allows the Lifepak 15 to be rapidly installed or removed from the mount as needed. Designed for use without pouches.

FA828A100 (12.26" H x 16.68" W x 8.16" D)



(I.M.S.) LEGACY SERIES

Phillips MRX

The *MRX Overhead Mount* is designed to mount directly to any overhead surface. A quick-release detent, allows the MRX to be installed or removed quickly from the mount. Once the MRX is secured in place, quick release provisions allow the mount to fold upwards, and the MRX can be deployed or stowed as needed. Made from aircraft aluminum.

FA557A1000 (14.2" H x 13.7" W x 14.66" D)



The *MRX Surface Mount* can be secured to any structurally appropriate surface. Quick-release and capture handle allows the MRX to be deployed or removed quickly from the mount as needed. Made from aircraft aluminum.

FA557A220 (12.5" H x 13.0" W x 11.79" D)



The *MRX Low Profile Surface Mount* is designed for use in both Air or Ground EMS platforms where space may be limited. The simple design can be secured to any appropriate horizontal surface. Quick-release trigger allows for rapid installation in removal of the MRX unit.

FA557A2700 (13.54" H x 12.85" W x 10.62" D)



(I.M.S.) LEGACY SERIES

Zoll CCT

The *CCT Swivel Mount* is a 2 piece custom system which includes an adaptor that attaches directly to the CCT and a swivel mount that attaches directly to any horizontal surface. Quick-release provisions allow the CCT to be rapidly deployed or removed from the mount as needed by medics. CNC machined from aircraft aluminum.

FA536A1120 (6.4" H x 5.0" W x 9.03" D)



Newport HT 70

The *HT 70 Surface Mount* is designed for use on horizontal surfaces in both Air or Ground EMS platforms. The semi-permanent mount includes an integrated one-hand capture and release handle, allowing the device to be secured or removed rapidly as needed. A wall-mount variant is also available.

FA892A101 (10.3" H x 10.7" W x 11.7" D)



The *HT 70 Low Profile Surface Mount* is designed for use in both Air or Ground EMS platforms where space may be limited. The simple design can be secured to any appropriate horizontal surface. Quarter-turn capture and release provides rapid installation and removal of the hT-70 device.

FA892A001 (10.1" H x 10.0" W x 10.8" D)



(I.M.S.) LEGACY SERIES

D.360 Swivel System

Our NEW *D.360 Swivel System* is a 2 stage system that includes a device adaptor and the *D.360 Swivel Base*. Each component can be purchased separately, allowing the *D.360* system to be employed in multiple locations. Once the adaptor and swivel base are secured in place, the adaptor disk slides into the swivel base and allows 360 degrees of rotation as needed. A quick-release frees the device for rotation, and allows the device to be removed from the swivel base when needed. CNC machined and 20.G tested.

FA868A100 (*Swivel Base*) (1.5" H x 7.57" W x 7.09" D)



Propaq MD/X



FA868A150

(Full System)

Hamilton T-1



FA858A001

(Full System)

Newport HT 70



FA892A090

(Full System)

(I.M.S.) LEGACY SERIES

Pole Mount Systems

The *iNX Equipment Pole System* is designed for use w *Ferno's iNX Integrated Patient Transport & Loading cot*. The *iNX Equipment Pole* is compatible with our *Universal Pole Clamp (UPC)* and can support most medical devices up to 26 lbs. Quick-release provisions allow the *iNX Rail Clamp* and *Equipment Pole* to be rapidly deployed or removed from the *iNX EMS cot* as needed by medics. Tested to meet SAEJ3043 and EN1789 Ground Ambulance Standards. Offered in 10", 15" 19" pole lengths. A D360 variant is available.

FA889A050 (26.18" H x 4.21" W x 2.56" D) for 19" length



Our *ProV Pole Mount* was designed for use with the *Propaq MD/X Series*. However, the mount is compatible with any device employing our *ProV System*. Easy to install or remove, the mount is semi-permanent, providing a surface to rapidly install or remove the *Propaq MD/X*. CNC machined from aircraft aluminum.

FM300A104 (4.45" H x 5.48" W x 4.26" D)



The *Propaq MD/X Surface Mount System* can be secured directly to any appropriate horizontal surface. This mount employs our *Universal Pole Clamp* allowing 360 degrees of rotation. Includes integrated IV pole. Easily installed or removed as needed. CNC machined from aircraft aluminum. Compatible with *Propaq MD* and *X-Series*.

FM300A105 (12.9 – 17.1" H x 3.6" W x 3.8" D)



(I.M.S.) LEGACY SERIES

Universal Pole Clamps

Our new line of *Universal Pole Clamps* are designed for use in Aeromedical or Ground EMS platforms. Each Pole Clamp is designed for use on vertical poles up to 1.5" diameter tubing. Horizontal configurations are available.

The *Universal Pole Clamp* for ReVel®PTV includes a one-hand "T" shaped quick-release handle for rapid removal of device. Designed by Ferno Aviation for CareFusion.

Contact CareFusion for purchase details.

FA385A204 (14.4" H x 7.54" W x 4.76" D)



The *Universal Pole Clamp* includes an adaptor specific to Bio-Med Devices allowing the BMD Pole Clamp to secure all Bio-Med Devices to most vertical poles. Ideal for Incubator Transporters, hospital carts or any application employing a vertical pole.

FA621A150 (5.20" H x 6.3" W x 2.0" D)



Our new *Universal Pole Clamp* for Propaq MD/X attaches directly to back of the device. The clamp is compatible with Propaq MD and X-Series devices (does not support Ethernet use with X-series).

FA821A330 (4.44" H x 5.64" W x 4.41" D)



This *Universal Pole Clamp* includes an adaptor specific to the LTV 1000 allowing the device to be secured to most vertical poles. Ideal for Incubator Transporters, hospital carts or any application employing a vertical pole.

FA845A231 (6.57" H x 6.0" W x 3.9" D)



(I.M.S.) LEGACY SERIES

Sapphire Infusion Pump Pole Clamp and Swivel

Our *Universal Pole Clamp (UPC)* for Sapphire Infusion Pump is available in a single, double, or triple unit configuration. An integrated swivel feature allows end-users to secure the self-contained assembly to vertical or horizontal tubing. A quick-release allows for rapid installation or removal of Sapphire units as needed. Each configuration includes an extendable IV Pole. Tested to meet and surpass FAA 20.G (rotary & fixed wing) Airworthiness Standards, Canadian Ground Ambulance Standards and SAE J3043. R.O.H.S. compliant.

FA910A670 (14.4" H x 7.54" W x 4.76" D) **Single**

FA910A664 (5.20" H x 7.5" W x 2.0" D) **Double**

FA910A655 (6.56" H x 12.26" W x 2.0" D) **Triple**



Power X1 Pole Mount System

The Power X1 Pole Mount is designed for use with *Ferno's POWER X1* EMS cot. The primary assembly is secured to the main chassis of the *POWER X1* under the patient surface, allowing for single or double equipment pole use. The equipment poles are compatible with medical devices employing our *Universal Pole Clamp (UPC)*. A quick-release allows the equipment poles to be rapidly deployed or removed as needed. A D360 Pole variant is available. CNC machined from aircraft grade aluminum.

FA908A915 (18.06" H x 21.1" W x 4.21" D)
Shown with 15" Equipment Pole



INTEGRATED MOUNT SYSTEM (I.M.S.)

Single Track Mounts



Single Track Mounts (STM's) are the smallest group of mounts in the *I.M.S.* family. Compatible with standard seat-track, L-track and Ferno-Track™. Designed to secure light-weight items, some *STM's* can be semi-permanently installed in fixed positions, while others serve as a rapidly installed and removable mount to meet immediate mission requirements.

Custom variants and applications are available.



(I.M.S.) SINGLE TRACK MOUNTS

Single Track Stud

The *Single Track Stud (STS)* is a semi-permanent stud designed to secure small and lightweight items on standard *Ferno-Track™* or single row seat track. Available in size 10-32" or 1/4" fasteners.

FM500A102-10.32 (10/32 inch fastener) (.739" H x 1.0" W x 1.0" D)

FM500A102-1.4 (1/4 inch fastener) (.739" H x 1.0" W x 1.0" D)



Single Track Mounts

The *Single Track Mount (STM)* is designed to mount an array of light equipment. For use with standard seat-track or *Ferno-Track™*, the *STM* can be used in a horizontal or vertical orientation. The *STM* can also be cut to custom lengths as needed for larger equipment. Quick release provision allows the mount to be rapidly installed, adjusted or removed as needed. CNC machined. Pictured 2.75" / 2 Post.

FM500A103 (1.55" H x 2.75" W x .41" D)



Our *Single Track Thermo Holster* is designed to secure (1) Welch Allyn SureTemp® Plus 690 or 692 digital thermometer, and is compatible with standard seat-track or *Ferno-Track™*. A quick-release allows the holster to be rapidly installed or removed as needed.

FM500A106 (6.64" H x 3.56" W x 2.01" D)



Our *Modular Track Handle (MTH)* is designed for use with *Ferno-Track™* or single row seat-track. The integrated ambidextrous quick-release trigger allows the handle to be rapidly secured or removed from track as needed. The *MTH* can also serve as a mounting location for an array of devices employing one of our *Universal Pole Clamps*.

FA891A670 (2.5" H x 8.0" W x 2.75" D)



(I.M.S.) SINGLE TRACK MOUNTS

IV Hooks

The Single *IV-1 Hook* is designed to hold (1) IV bag. For use with standard seat-track or *Ferno-Track™*, the *STM IV1* can be used in a horizontal or vertical orientation. A quick-release provision allows the mount to be rapidly installed, adjusted or removed. CNC machined.

FM500A103-IV-1 (3.32" H x 1.4" W x 1.61" D)



The Double *IV-2 Hook* is designed to hold (2) IV bags. For use with standard seat-track or *Ferno-Track™*, the *STM IV2* has a quick-release provision that allows the mount to be rapidly installed, adjusted or removed. CNC machined

FM500A103-IV-2 (3.32" H x 4.0" W x 1.61" D)



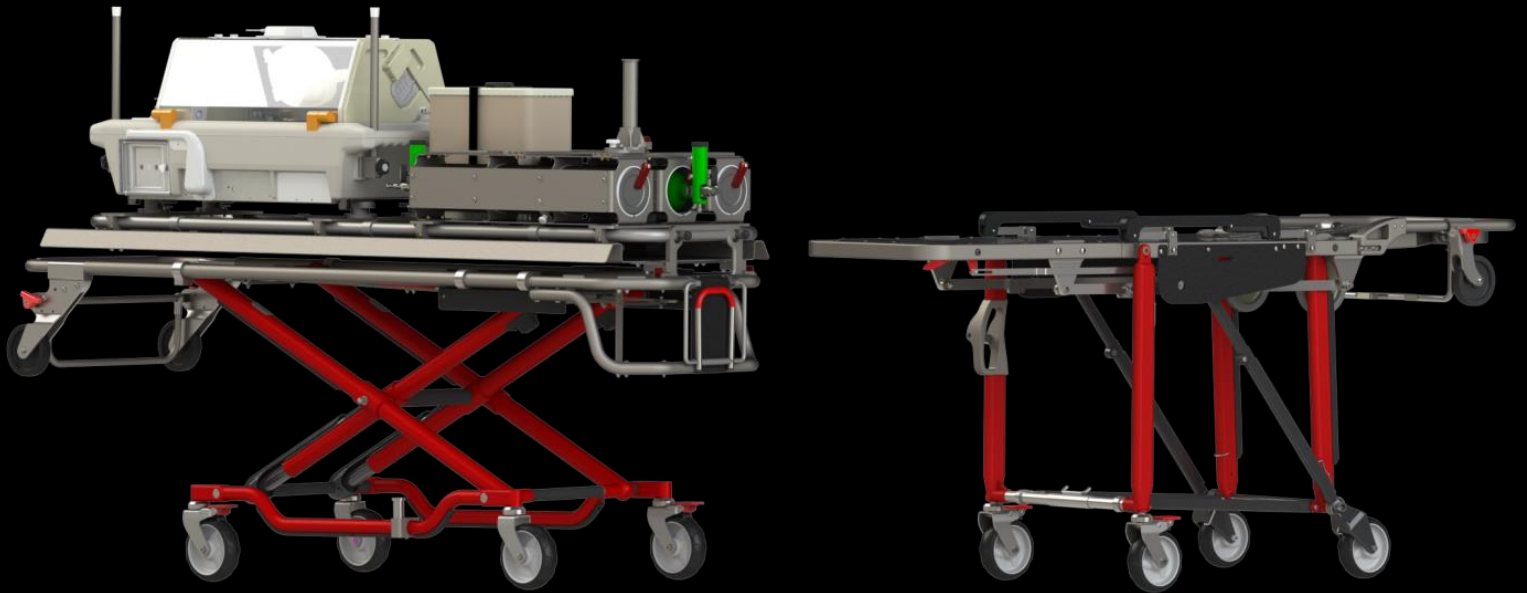
Our *Folding Overhead IV Hook* is designed to hang 1-2 IV bags and is compatible with standard seat-track or *Ferno-Track™*. A single quick release allows the IV hook to be rapidly installed or removed as needed, and includes a folding feature for a low profile when not in use. CNC machined.

FA892A615 (2.81" H x 2.96" W x 1.0" D) Deployed
(1.82" H x 2.96" W x 1.0" D) Folded



STRETCHER SOLUTIONS

Aero Stretchers



Ferno Aviation offers a full line of stretcher solutions for aeromedical transport. Our product range includes litters, full patient stretchers and incubator transporters. Contact our customer service department for details on how we can meet your specific requirements.

Installation Approval

As produced Ferno Stretchers are not approved for aircraft installations and it is our policy to only supply Litters to aircraft manufacturers, aircraft modification centers and other specialists who have the ability to perform aircraft installations and obtain approval of the installation under an FAA Supplemental Type Certificate (STC).



AERO STRETCHERS

Model 28-A

The *Model 28-A* is the Aeromedical version of Ferno's popular Model 28 Roll-in cot which has set the standard for easy patient loading in ground ambulances and helicopters. Based on customer feedback, the 28-A has been improved in several important ways to meet Aeromedical customer requirements. It is the most common stretcher used in the EC-135.

Model 28-A (Standard)

Model 28-A 429 (Custom variant for Bell 429)

The *Model 28-A Ground Compatibility Kit (GCK)* provides the 28-A with an optional kit that allows compatibility with helicopters, as well as, ground EMS vehicles using Ferno 175 fastener system.

Model 28-A GCK (With Ground Compatibility Kit)



Model 28-A1

The 28-A1 is the Aeromedical version of Ferno's new 28Z series of chair/cots. As with the 28A, the 28-A1 has been simplified and made lighter by deleting all components associated with the chair-folding feature. This cot is supplied without a pad or patient restraints. Mattress pads, patient restraints, and shoulder harness assemblies are available as optional equipment.

Model 28-A1 (Standard)

Model 28-A1 Ground Compatibility Kit (GCK) provides the 28-A with a optional kit that allows compatibility with helicopters, as well as, ground EMS vehicles using Ferno 175 fastener system.

Model 28-A1 GCK (With Ground Compatibility Kit)



AERO STRETCHERS

Model 35-A

The Model 35A Mobile Transporter, combines the benefits of a multi level cot with the easy loading of a roll-in style cot. Empty one-person load capability for user convenience. Back rest is adjustable to 8 different height levels. The Ferno 35A Cot provides exceptional value for X-frame cot users. The cots weighs just 74 lbs. and has a proven record of dependability with over 20 years of use by services all over the country.

Model 35-A



Model 35-X PROFlexx

Ferno's 35 PROFlexx®, X-Frame cot, has been carefully engineered to provide industry leading stability you need when transferring and transporting patients. A longer, fixed front leg in the X-Frame provides minimal flex and a low center of gravity at all heights. This means you may be less likely to flip or tip a cot during transfers and transport, reducing situations that may cause injury to you or your patient. The PROFlexx® can carry 700 lbs. in the transport position and up to 1100 lbs. in the lowest position.

Model 35-X



Model 93-H PROFlexx

The 93H PROFlexx® H-frame cot, combines carefully engineered frame geometry and L-casting technology with Ferno's exclusive transport position to provide maximum stability when rolling over surfaces and navigating obstacles such as curbs or door-sills. All metal frame construction provides maximum durability for years of dependable service. A wide range of features and accessories accommodate different size operators and provide for the safe handling of any size patient.

Model 93-H



AERO STRETCHERS

(FTS) Folding Transport System

The Ferno Aviation *Folding Transport System (FTS)* is designed for use with side loading medical aircraft to ease in patient movement. The FTS is compatible with the Heli-Dyne dual-pivoting litter systems, standard Ferno and Lifeport stretchers. The FTS folds into a compact size for storage in the aircraft baggage compartment. It is easy to deploy and has no requirement for FAA certification. The following versions are available: Heli-Dyne Dual Pivoting Litters | Standard 12-2 Series Stretchers | Air Methods Stretchers | Lifeport Stretchers | Agusta Westland Stretchers



Model FTS (29.75" H x 16.50" W x 54" L) Deployed
(11.50" H x 23.50" W x 33.5" L) Folded

(FTS) Power Lifter

The *FTS Power Lifter* is designed for use with our *Folding Transport System (FTS)*. As an optional accessory, the *FTS Power Lifter* provides (17.5) inches of additional height when loading or unloading patients.



FA631A1000 (Variable Height up to 17.5")

Model 46 Aisle Chair

The Model 46 Passenger Chair is designed to conveniently transport a patient through narrow passageways, including most commercial aircraft aisles, or other areas where space is limited. The sturdy lightweight aluminum frame is designed for easy loading by airline attendants. Includes heavy duty vinyl coated nylon cover and seat pad. The 46 Chair comes with (2) upper body patient restraints and (1) leg restraint.



Model 46 (52.25" H x 14.50" W x 33.75" D)

STRETCHER SOLUTIONS

Accessories



Ferno Aviation offers a diverse line of standard accessories and adjunct equipment kits compatible with both of our *Aero Stretcher* and *Aero Litter* product lines. We specialize in custom variants or applications and can create a unique accessory or equipment kit to meet your mission requirements.

Contact our customer service department for details.



ACCESSORIES : STRETCHERS / LITTERS

Patient Restraints

The *Model 417 Shoulder Harness Restraint* is a primary-use restraint system and is vital for complete patient safety in crash situations. It features two adjustable shoulder straps and an adjustable two-piece torso strap, with automotive metal buckles and hardware.

Model 417



The *Model 430 Restraint* is a two-piece, adjustable, primary-use restraint system made of 2" nylon webbing with automotive chrome plated metal buckles and hardware. Comes in 7' or 9' lengths.

Model 430 (Specify Length)



FAA Patient Restraints

Our FAA Approved Shoulder Harness is designed for use with Ferno Aviation aeromedical stretchers or litters, and conforms to (TSO) C114. Includes shoulder harness and lap restraint.

SUF303042810



Our FAA Approved Patient Restraint are designed for use with Ferno Aviation aeromedical stretchers or litters. The restraints conform to FAA (TSO) C22g.

STFL3030810



Our FAA Approved Patient Restraint replacement kit, conforms to FAA (TSO) C22G.

STFC3030810



ACCESSORIES : STRETCHERS / LITTERS

Custom PacRac™ Solutions

We offer a full line of PacRac™ Equipment Tables with rigid or folding sides that are compatible with both our Aero Litter and Aero Stretcher product lines. Ideal for ground transport or mass casualty collection points. Each PacRac™ serves as a base platform that can be fitted with simple footman loops to secure equipment - or modified to employ any of our medical device mounting solutions. PacRac™ Equipment tables are individually made per your specific needs. Contact customer service for more details.



ACCESSORIES : STRETCHERS / LITTERS

PacRac+™ Equipment Table

Our new *PacRac+™ Equipment Table* can be configured for use with Model 28A, 28A-1, 35-X and Powerflexx cots. Each configuration includes an interface that mounts directly to the cot. Our *IMS Pro Series Mini-Track* top surface completes the PacRac+™ allowing an array of devices to be secured during transport. With the interface secured in place, the PacRac+ can be rapidly installed or removed from the cot as needed. Additionally, each side of the PacRac+ can be opened like a gate with medical equipment still on the top surface, this unique design feature allows patients to be transferred from the cot without removing the PacRac+. The PowerFlexx configuration is pictured.

FA531A200 (PowerFlexx Cot) (18.40" H x 21.77" W x 19.48" L)

FA531A300 (Model 28-A1 Cot) (18.40" H x 21.77" W x 19.48" L)

FA531A400 (Model 35-X Cot) (18.40" H x 21.77" W x 19.48" L)

A *D.360 Pro PacRac+™* interface also available. This *D.360 Swivel* assembly provides a removable swivel base which provides 360 degrees of rotation for any medical device employing our *D.360 Swivel System*.

FA868A001 (D.360 Pro PacRac+™) (1.80" H x 7.57" W x 7.55" L)



ACCESSORIES : STRETCHERS / LITTERS

Stretcher Oxygen Mount

Our *Oxygen Bottle Mount Kit*, is designed for use with Model 35-A and 35-X cots allowing on board oxygen to be located with a lower center of gravity. The Kit locates the O2 bottle below the patient surface and does not interfere when the cot is lowered. Designed for use with "E" sized O2 cylinders.

FA587A100 (35-A) (6.5" H x 9.4" W x 26.25" L)

FA588A100 (35-X) (6.5" H x 9.4" W x 26.25" L)



Zoll E-Series PowerFlexx Mount

Our new *Stretcher Mount* for ZOLL E-Series is designed for use on Ferno's *s PowerFlexx* stretcher. The system is a 2piece system that includes an adaptor for E-Series device, and a mount that secures to the undercarriage of the *PowerFlexx* providing an elevated surface in which to secure the E-Series device. The elevated base can be removed via quick-release, and includes our *D.360 Swivel System* allowing medics to adjust line of sight as needed.

FA883A100 (20.78" H x 10.25" W x 17.74" D)



LBS Jr. Pole Mount Kit

The *LBS Jr.* with Integrated Pole Mount Kit includes (4) Pole Mounts and a modified LBS Jr. Platform. Each Pole can be installed or removed from the LBS platform as needed, and provides up to (4) locations to secure an array of medical devices employing our *Universal Pole Clamp* system.

FA891A300 (13.25" H x 32.79" W x 42.73" L) Sides Up / Poles Deployed
(13.25" H x 34.12" W x 42.73" L) Sides Down / Poles Deployed



STRETCHER SOLUTIONS

Incubator Transporters



Ferno Aviation offers a full range of dedicated Incubator Transporters for EMS and Aeromedical transport. Designed for use with incubators manufactured by International Biomedical (Airborne), Air Shields (Drager) and Atom. Contact our customer service department for details on how we can meet your specific requirements.

Installation Approval

As produced, Ferno Incubator Transporters are not approved for aircraft installations and it is our policy to only supply Litters to aircraft manufacturers, aircraft modification centers and other specialists who have the ability to perform aircraft installations and obtain approval of the installation under an FAA Supplemental Type Certificate (STC).



INCUBATOR TRANSPORTERS

Model 28- IT 12-2

The 28-IT 12-2 is an Incubator Transporter version of Ferno's Model 28A chair/cots. The *Lift-Off Deck* includes quick release mounting provisions for use with the *12-2 Litter* for adults, as well as, all currently available incubators by International Biomedical (Airborne), Air Shields (Drager) and Atom. Available configurations include (MKII stacked configuration) or (MKIII side-by-side configuration). MKIII side x side pictured.

Model 28-IT 12-2



Model 28- IT

The 28-IT is the Incubator Transporter version of Ferno's Model 28 A Stretcher. The 28-AIT is available with quick release mounting provisions for all currently available incubators by International Biomedical (Airborne), Air Shields (Drager), and Atom. Available configurations are include (MKII stacked configuration) pictured right, or (MKIII side-by-side configuration). Pictured bottom right.



Model 28-IT MKII (*Stacked Configuration*)

Model 28-IT MKIII (*Side x Side configuration*)



INCUBATOR TRANSPORTERS

35-XIT 12-2

The 35PROFlexx®-IT/12-2 is a specialized Incubator Transporter version of Ferno's Model 35 PROFlexx®. The 35 PROFlexx®-IT/12-2 consists of two separate components: A model 35 PROFlexx® undercarriage with a special top surface and a Model 12-2 low profile litter which can be equipped with an array of custom mounting provisions. Shown with Atom Incubator.

Model 35-XIT 12-2



35-XIT

The 35 PROFlexx® IT is an Incubator Transporter version of Ferno's Model 35 PROFlexx® cot. Features include quick release mounting provisions for use of all currently available incubators by International Biomedical (Airborne), Air Shields (Drager) and Atom. Optional configurations available include (MKII center stacked configuration) pictured right or (MKIII side-by-side configuration) .

Model 35-XIT MKII (*Stacked Configuration*)

Model 35-XIT MKIII (*Side-By-Side configuration*)



93-HIT

The 93-H-IT is the Incubator Transporter version of Ferno's Model 93-H cot. The 93-H-IT is available with quick-release mounting provisions for all currently available by International Biomedical (Airborne), Air Shields (Drager), and Atom. Optional configurations include (MKII stacked configuration) or (MKIII side by side configuration). The drop feature is retained on center-mounted configurations.

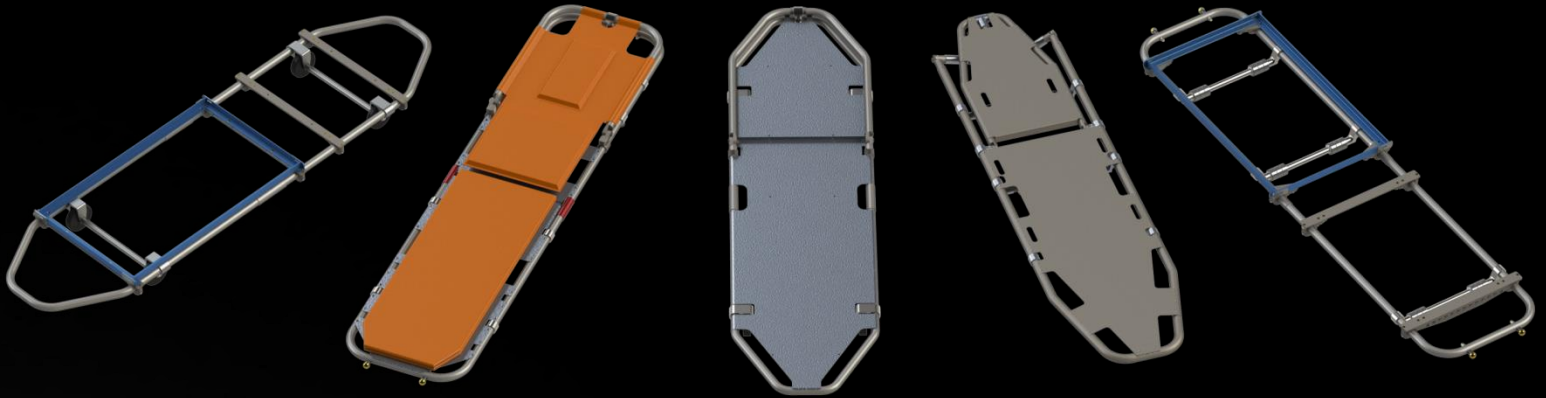
Model 93-H IT MKII (*Stacked Configuration*)

Model 93-H IT MKIII (*Side-By-Side Configuration*)



STRETCHER SOLUTIONS

Aero Litters



Ferno Aviation offers a full range of Aero Litters. Optional, custom configurations and applications are available. Contact our customer service department for details on how we can meet your specific requirements.

Installation Approval

As produced Ferno Litters are not approved for aircraft installations and it is our policy to only supply Litters to aircraft manufacturers, aircraft modification centers and other specialists who have the ability to perform aircraft installations and obtain approval of the installation under an FAA Supplemental Type Certificate (STC).



LITTER SOLUTIONS

Model 9

The *Model 9* and *Model 9A* litters are designed specifically for low-profile applications. Both models feature a multi position, locking backrest and include 4" wheels at the head end and stationary posts at the foot-end. The *Model 9* includes FAA approved heavy-duty vinyl coated cover and (2) standard Ferno 430 patient restraints. The *Model 9A* (not pictured) includes FAA approved cover and FAA approved patient restraints. 350 lb. Load Rating.

Model 9 (4.87" H x 19" W x 62.9-73.6" L)

Model 9A (4.87" H x 19" W x 62.9-73.6" L)

Model 9 Custom

Custom *Model 9* and *Model 9A* variants are available. Contact our Customer Service Department for details.

Model 12-2

The *Model 12-2* is Ferno Aviation's most popular Aeromedical litter - available in six versions with an array of custom accessories available. The following versions are available: *12-2 - Standard* | *12-2A* – Standard features, with FAA approved cover and restraints | *12-2IT* - Incubator Transport Variant.

Model 12-2 (3.0" H x 18" W x 73.0" L)

Model 12-2 IT

Custom *Model 12-2 IT* variants are available. Contact our Customer Service Department for details.

Model 12-2 IT



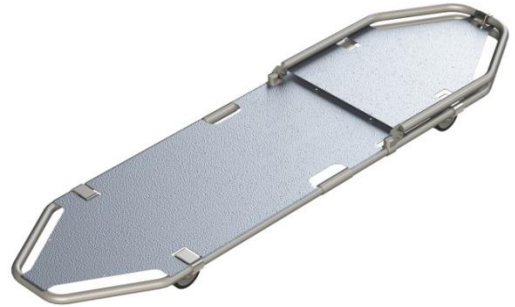
LITTER SOLUTIONS

Model 1123

The *Model 1123* series offers a low-profile litter with an adjustable backrest, tapered head and foot ends, 4" wheels on each end and an optional heavy-duty, vinyl coated nylon cover is available. Incubator Transport variants are also available. 350 lb. load rating.

Model 1123 (4.87" H x 19.5" W x 72.5" L)

Model 1123A (4.87" H x 19.5" W x 72.5" L)



Model 1123-IT

Custom *Model 1123 IT* variants are available. Contact our Customer Service Department for details.

Model 1123-IT (4.87" H x 19.5" W x 72.5" L)



Model 1400 Series

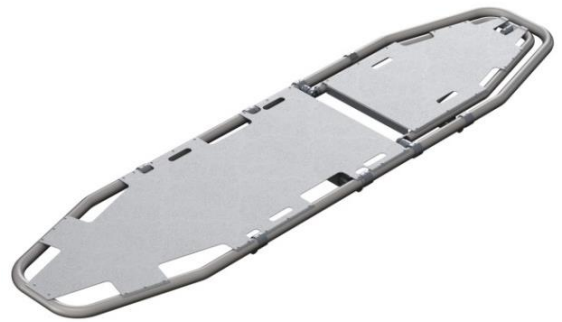
Our *Model 1400* series of aeromedical litters are designed for both fixed and rotary wing applications. Each 1400 system can be custom tailored to fit your program's operational requirements. All model 1400 series litters come with an adjustable back rest.. Optional FAA approved restraints are available.

Model 1401 is non-folding (pictured top right)
(3-3.5" H x 19." W x 72." L)

Model 1402 includes a single fold in the center
(3-3.5" H x 18.25" W x 35.75-72.25" L)

Model 1403 is a tri-fold flat bottom litter
(3.0" H x 18.25" W x 29-72.25" L)

Custom 1401 (Arrow Aviation - bottom photo)



LITTER SOLUTIONS

Advanced Life Support Litter (ALSL)

NEW Product

Our Gen-2 Advanced Life Support Litter (ALSL) is designed as a multi-mission patient platform that can be used during the entire transition of pre-hospital care (POI to medical facility), including long duration EMS or Aeromedical transport with advanced care applications. The base platform includes (4) patient positions, storage space, FAA patient restraints, and shock mitigation to protect the patient from vibrating frequencies. Available mounting provisions include components of our I.M.S. Pro Series family of mounts, as well as, choice of on-board Oxygen mounting provisions for E sized cylinders, EE sized cylinders, Saros Concentrators, or DMOS Liquid Oxygen. Optional on-board power distribution system is available. The ALSL is compatible with our 28-A1 Aero Stretcher.

FM842A100 (12.75" H x 21.75" W x 72.0–88.37" L)



ProV Receiver
FM300A100



D360 Pro Swivel
FA906A075



Med-Rail Pro
FM403A050



Pole-Mount Pro
FM403A001



IV-Mount Pro
FM403070

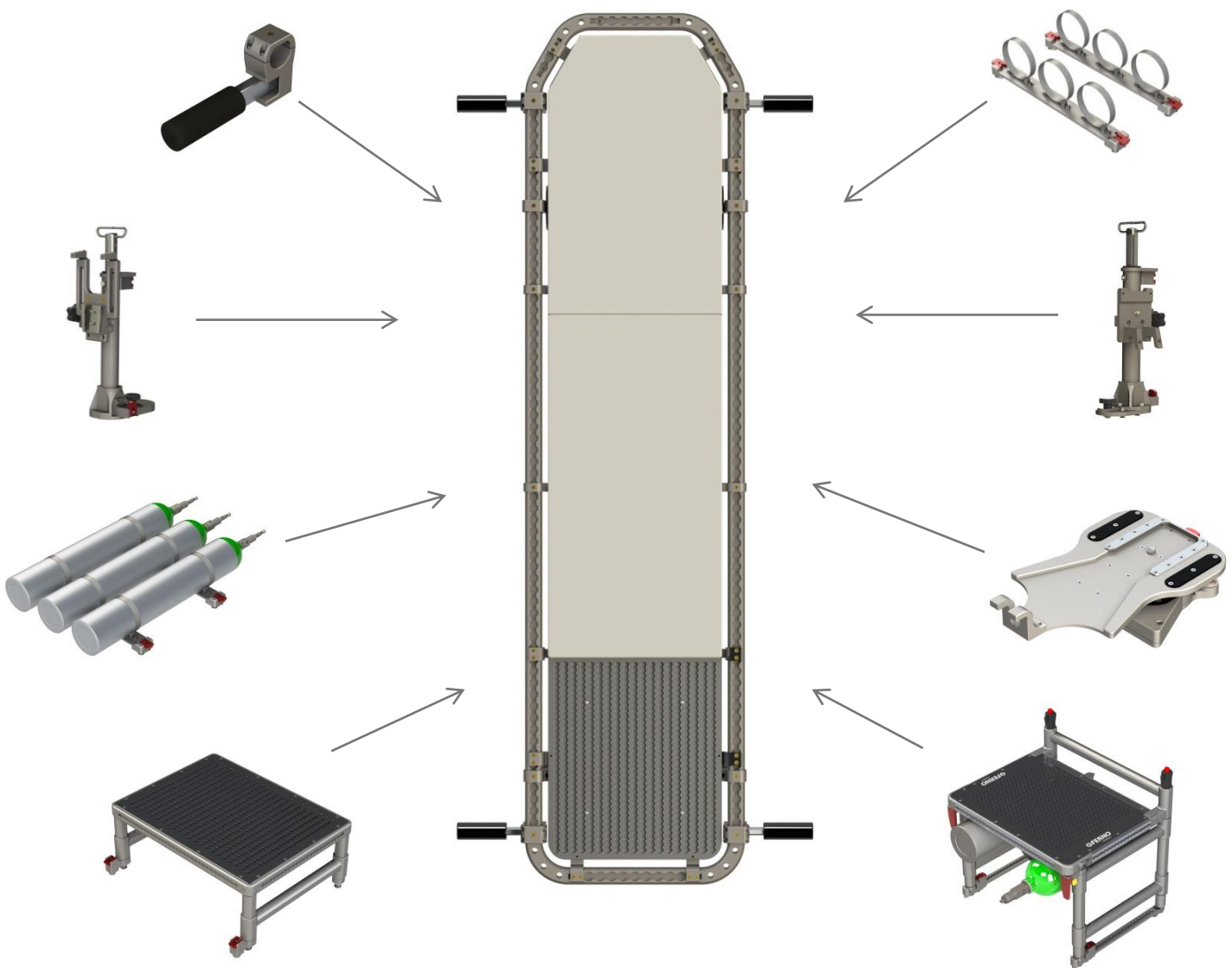
LITTER SOLUTIONS

Modular Transport Litter System (MTLS)

NEW Product

Our NEW *Modular Transport Litter System (MTLS)* is designed for critical care transport, where it is necessary to transport patients along with an extensive selection of medical equipment. The MTLS system consists of a base litter platform employing our patent pending Tube-Track™, that provides an integrated track mounting system throughout the perimeter frame. A wide selection of general purpose and product specific track-mounting solutions are available. The MTLS can be configured for multi-mission advanced care applications.

FA854A110 (Base Platform) (4.77" H x 18.0" W x 73.0" L)



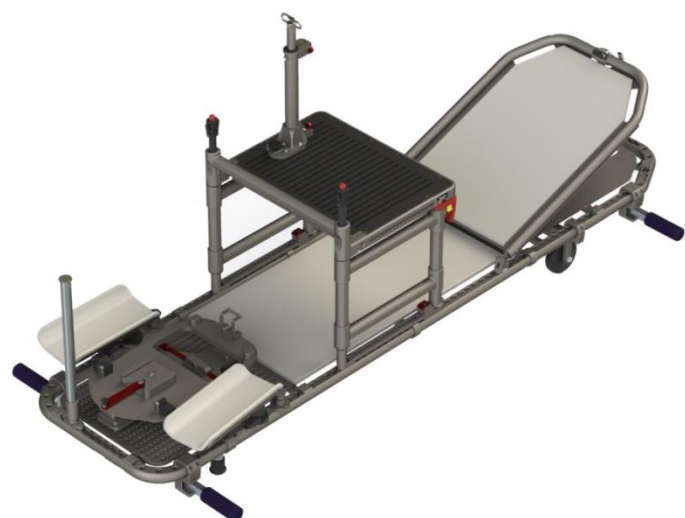
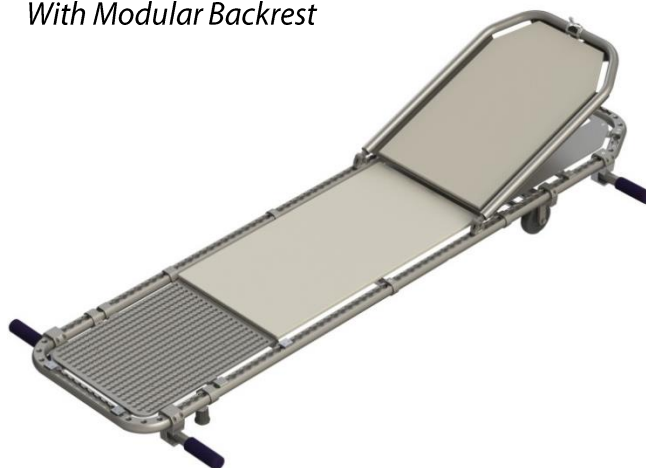
LITTER SOLUTIONS

(MTLS) Configurations

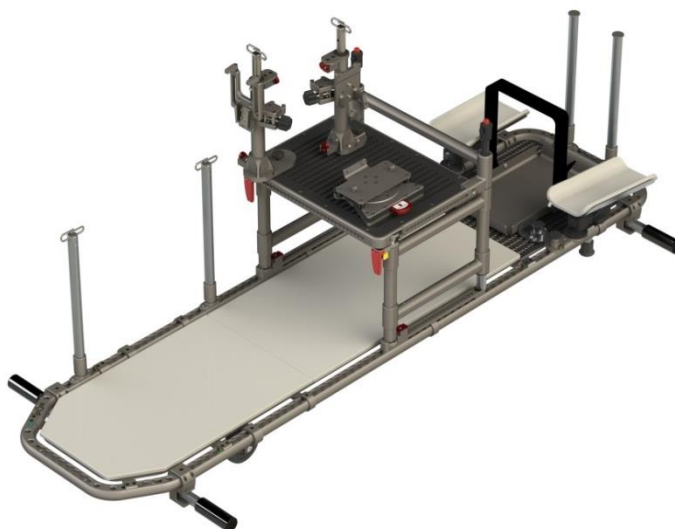
Base MTLS Platform



With Modular Backrest



Advanced Care Configuration



Advanced Care / Adjunct Equipment Mounts

LITTER SOLUTIONS

(MTLS) Accessories

The *MTLS Modular Folding Handle* is designed for use with our MTLS patient platform. Each handle can be strategically placed and secured directly to the *MTLS* perimeter frame *Tube-Track™*. Once in place, the folding feature allows the handle to be stowed out of the way as needed.

FA845A320 (3.62" H x 1.5" W x 7.72" L)

The *MTLS Tube-Track Pole Mount* is designed for use with our MTLS platform, and mounts directly to the *MTLS Tube-Track™* perimeter frame. Offered with or without an optional Stainless IV hook. Used in conjunction with our *Universal Pole Clamp*, the *IV Pole Mount* can support an array of medical devices. Offered in 3 heights (15", 19" and 23").

FA854A280-15 (15" H x 1.0 W)

FA854A280-19 (19" H x 1.0 W)

FA854A280-23 (23" H x 1.0 W)

The *MTLS Modular Leg Stirrup* is designed for use with our MTLS patient platform. Quick-release provisions allow the stirrups to be rapidly deployed or removed as needed for transport. Each stirrup employs an adjustable gimbal providing multiple-axis-adjustability to match patient ergonomics.

FA854A200 (Variable "H x 5.8" W x Variable "L)

The *MTLS Modular Back Rest* for *MTLS* patient platform is designed for rapid installation and removal. This optional accessory includes a replaceable Gel Pad for patient comfort.

FA854A176 (1.50" H x 18.1" W x 26.20" L)

The *MTLS O2 Deck Mount* is designed for use with our *Modular Transport Litter System (MTLS)*. Ideal for pediatric transport, the mount includes quick-release provisions allowing for rapid installation or removal of the mount. Capable of securing up to (3) cylinders and compatible with "D" or "E" sized cylinders by adjusting the location of the mounts on the *MTLS Tube-Track™*. Sold in pairs.

FA854A210 (4.9" H x 16.8" W x 2.0" D)



LITTER SOLUTIONS

(MTLS) Accessories

The *MTLS PacRac+™ Equipment Deck* is a shorter version of the *MTLS Equipment Table*. Offered in (2) different heights (0" and 7") these equipment decks can be secured directly to the *MTLS* patient platform. Integrated *IMS Pro-Series* top surface provides a base for an array of mounting options.

FA865A200 (0" Rise) (1.5" H x 18.5" W x 15.7" D)



FA865A300 (7" Rise) (7.3" H x 18.5" W x 15.7" D)



The *MTLS Cardiohelp Mount* is designed for use with our *MTLS* patient platform. The mount is secured to the platform via our *IMS Mini-Track*. Once in place, the mount provides an interface to secure Maquet's Cardiohelp device. Quick-release provisions ensure rapid installation and removal of the device from the *Modular Transport Litter System. (MTLS)*.

FA905A650 (3.2" H x 8.0" W x 13.2" L)



The *MTLS HU-35 Tray Mount* is designed for use with our *MTLS* platform. The equipment tray serves as an interface between medical equipment and the *MTLS* platform. Quick-release provisions allow rapid installation or removal of the tray and equipment.

FA854A240 (1.3" H x 10.1" W x 14.0" L)



LITTER SOLUTIONS

(MTLS) Accessories

The *MTLS PacRac+™ Equipment Table* is designed for use with our *Modular Transport Litter System (MTLS)*. Quick-release risers serve as the interface between litter and table, and offered in (2) different height settings. Integrated *IMS Pro-Series* top surface provides mounting options for an array of medical devices.

FA865A100 (14.0" H x 18.8" W x 15.7" D)



1" Riser

FA854A190



2" Riser

FA854A180

The *MTLS PacRac+™ Equipment Table O2 Mount*. The mount is secured to the underside of the *PacRac+™ Equipment Table* and includes mounting provisions for (3) Oxygen bottles. Ideal for use with Pediatric patients being transported via our *Modular Transport Litter System (MTLS)*.

FA854A220 (5.3" H x 19.6" W x 8.5" D)



MTLS Patient Surface Gel Pads provide patient comfort when being transported. Each Gel Pad is removable, replaceable and easy to decontaminate.

FA854G111 (Backrest) (.5" H x 15.0" W x 18.2" L)



FA854G112 (Torso) (.5" H x 15.0" W x 23.9" L)



FA854G 201 (Leg Stirrup) (.5" H x 5.1" W x 10.0 L)



NEONATAL / PEDIATRIC SOLUTIONS



NEONATAL / PEDIATRIC SOLUTIONS

Baby Pod 20

The *Baby Pod 20* is designed to safely transport infant sized pediatric patients up to 17.5 lbs. The *Baby Pod 20* is a lightweight carbon fiber outer shell lined with a shock absorbent foam inner layer, with an internal patient positioning vacuum mattress, transparent shields and internal safety straps to secure the infant inside the Pod. The *Baby Pod 20* includes a Co2 Evacuation System to reduce Co2 buildup in the patient compartment. Our Aviation Restraint Kit (ARK) by *Ferno Aviation* for use on *Baby Pod 20*'s replaces the factory supplied restraints with an FAA / TSO approved restraint system.



Baby Pod 20 is tested CEN 1789 / SAE J3043

FA851A100 (Baby Pod 20 with Ferno Aviation FAA Restraint Kit)

FA851K110 (New Baby Pod 20 Retro Fit FAA Restraint Kit)

FA851K105 (Replacement FAA Restraint Kit)



Medkids™



The *Pedi-Mate* Pediatric Restraint System quickly adapts to any ambulance cot, to safely transport children ranging in size from 10-40 lb. (4.5-18 kg). Five point harness system securely holds patient. Nontoxic, easy-to-clean vinyl rolls compactly for storage.

Pedi-Mate®



The *Pedi-Sleeve* fits over standard adult backboards allowing pediatric immobilization for patients ranging in size from 12 lb. (5kg) to 60 lb. (27 kg). Includes, crescent-shaped compressible head blocks, restraint straps, and a self-contained Pneumatic Positioning Device (PPD).

Pedi-Sleeve



The *Baby-Board* helps maintain cervical neutral alignment in infants with the self-contained Pneumatic Positioning Device (PPD). Accommodates thoracic elevation requirements and does not interfere with invasive or noninvasive equipment.

Baby-Board